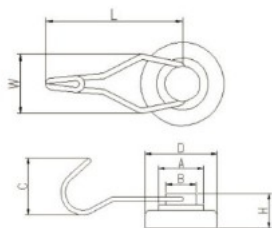


### Parameters of common neodymium pot magnets with swivel hooks



Model	D	A	B	C	H	L	W	Vertical Force (Kgs)	Side Force (Kgs)	Weight(g)
RMH-D25	25	20	13.5	24	15.5	55	23	14	3.5	38
RMH-D32	32	20	13.5	24	15.5	55	23	23	5.5	52
RMH-D36	36	20	13.5	24	15.5	55	23	40	6.5	65
RMH-D40	40	20	13.5	24	15.5	55	23	50	7	84
RMH-D42	42	20	13.5	24	16.5	55	23	65	8	92

**Remind:** Although the surface of the neodymium pot(cup )magnet with swivel hook have been anti-rust treated with electroplating, if it is not used and stored properly, it will still rust. Please put the neodymium magnetic hooks in dry and room temperature environment, preferably in a sealed bag.